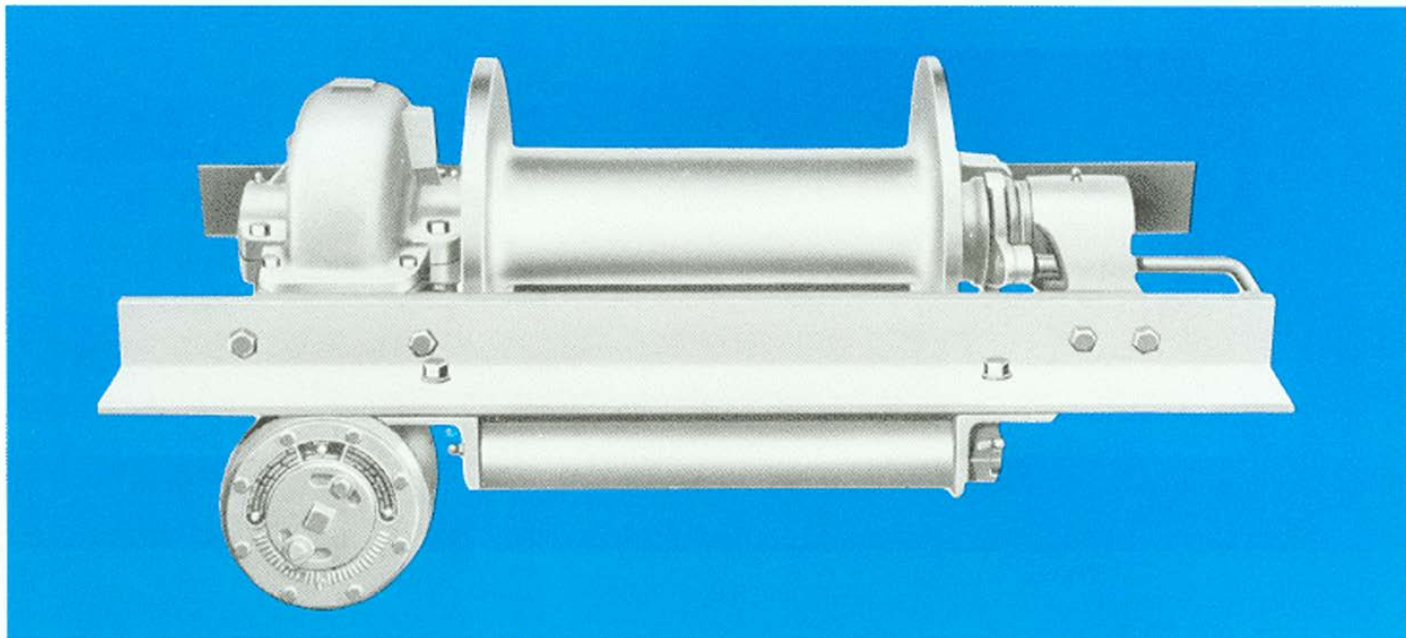




Tulsa Winch

Model 24 Winch
30,000 POUNDS / HEAVY DUTY



DESCRIPTION and FEATURES

● THE MODEL 24

A heavy duty low mount worm gear winch with a 32:1 gear ratio and an improved air-cooled safety brake—automatically engages when power is reversed or removed from winch.

● WORM

Manufactured from an alloy steel forging, machined to close tolerances, ground journals and threads, hardened in a “controlled atmosphere” furnace for long service life.

● WORM GEAR

Manufactured from the highest quality bronze alloy, accurately machined to match the worm.

● SLIDING CLUTCH

Manufactured from manganese alloy steel. Two jaws are matched for complete and even engagement with the drum clutch, with reverse draft to eliminate disengagement under load.

● BEARINGS

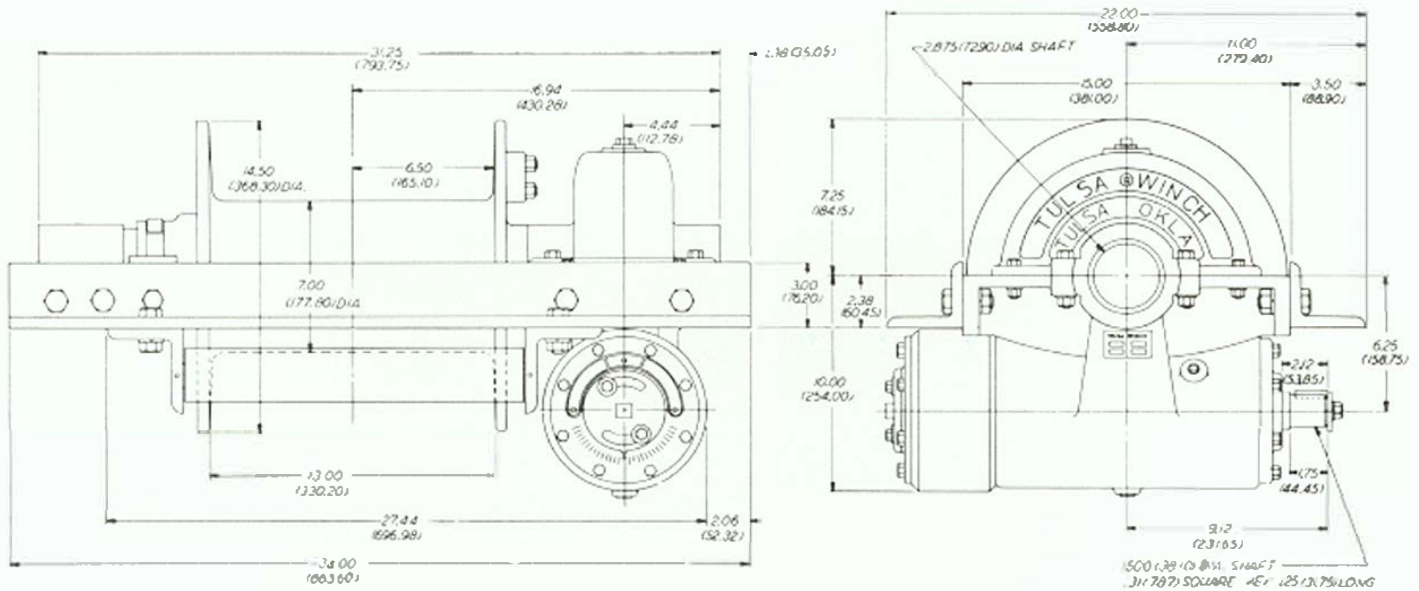
The worm rotates on deep-groove, heavy duty, radial ball bearings which never need adjustment.

● PRECISION MANUFACTURED COMPONENTS

Extra long service life and trouble free operation.

● NOT APPROVED FOR PERSONNEL LIFTS.

Installation Drawings



SPECIFICATIONS

Sale Working Capacity Pounds (13.608 KG)	Drum Shaft Diameter 27/8" (73.03 MM)	Drum Barrel Diameter 7" (177.80 MM)	Worm Gear Ratio 32:1	Weight Pounds (233.15 KG)
30,000				514

RATED LINE PULL IN POUNDS (KILOGRAMS) PER LAYER OF CABLE

Cable Size 3/4" (19.05 MM)	1st Layer (13,608)	2nd Layer (11,401)	3rd Layer (9,810)	4th Layer (8,609)	5th Layer (7,670)
30,000	25,135	21,627	18,979	16,909	

CABLE CAPACITY IN FEET (METERS) Corrected for 90% Taut Cable

Cable Size 3/4" (19.05 MM)	1st Layer (9.45)	2nd Layer (21.03)	3rd Layer (34.44)	4th Layer (49.68)	5th Layer (66.75)
31	69	113	163	219	

TYPICAL MODEL CODE

